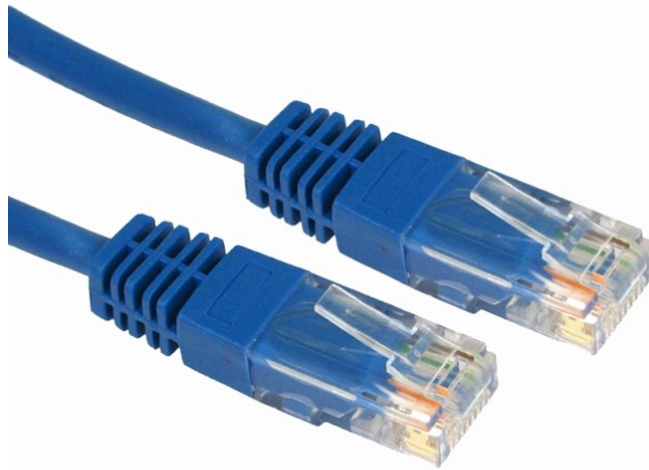


4XEM 100FT Cat5e Molded RJ45 UTP Network Patch Cable (Blue)

4XEM Part- 4XC5EPATCH100BL



Constructed of top-quality materials, 4XEM Cat5e solid twisted pair patch cable is designed for high performance networking applications. Rated for 350MHz/1Gbps communication, this patch cable meets and exceeds current industry standards including IEEE 802.3ab, IEEE 802.5 ANSI/EIA/TIA 568, ISO/IEC 11801 and ETL. Molded PVC strain relief ensures long-lasting performance and reduces the risk of cable damage. A snag less design protects the locking tabs on the RJ45 connectors from being snapped off during installation.

Comes with 4XEM's Lifetime warranty.

**4XEM Products Are Available At Your Favorite Online Retailers**

**WWW.4XEM.COM**

Contact Todd Schaus 4XEM sales Rep  
1-866-999-4936 Ext.104    [tschaus@4xem.com](mailto:tschaus@4xem.com)



## Features

- Offers a reliable network connectivity
- Features Category 5e cable type
- Features Molded
- Features 1 x RJ-45 Male Network connector to let you worry-free about setting up a connection with a network device
- Top quality materials
- Patch designed for high performance networking applications
- Exceeds industry speed standards
- PVC strain relief ensures longevity, performance, and reduces possible cable damage
- Locking tabs protected from being snapped off during installation
- Lifetime warranty

## Application

- Home
- Connections
- Office
- Servers

**4XEM Products Are Available At Your Favorite Online Retailers**



Warranty Information	Warranty	Lifetime
Performance	Cable Rating	CAT5E - 100 MHz
Connector(s)	Connector A Connector B	RJ-45 Male - EIA/TIA 568B Pinout RJ-45 Male - EIA/TIA 568B Pinout
Hardware	Cable Jacket Material Snagless Shielding	PVC (Polyvinyl Chloride) No No
Physical Characteristics	Colour Conductor Type Wire Gauge Cable OD Cable Length Weight of Product	Blue CCA (Copper-Clad Aluminum) 26 AWG 0.20 in [5.0 mm] 100 ft [30.5 m] 20.74 oz [588 g]
Packaging Information	Package Height Package Width Package Length Shipping (Package) Weight	9.84 in [250 mm] 8.07 in [205 mm] 2.42 in [61.5 mm] 20.81 oz [590 g]
What's in the Box	Included in Package	100 ft Cat 5E Patch Cable - Blue

\* Product appearance and specifications are subject to change without notice.

\* Same day shipping is only available for orders shipping within the United States.

**4XEM Products Are Available At Your Favorite Online Retailers**

**WWW.4XEM.COM**

**Contact Todd Schaus 4XEM sales Rep**  
**1-866-999-4936 Ext.104    tschaus@4xem.com**

